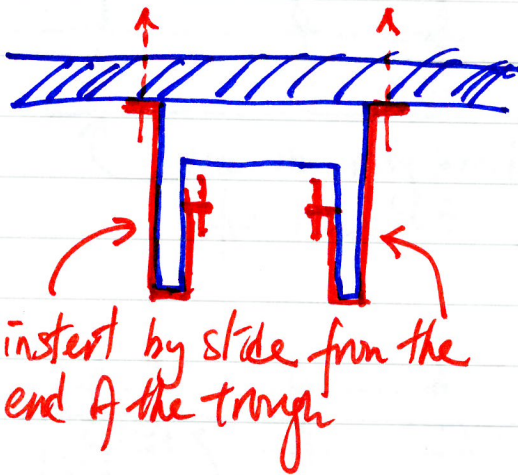


Existing Ceiling
Mounting System
Existing Light Trough System
clw T₈ LED Tube Fixture



insert by slide from the
end of the trough

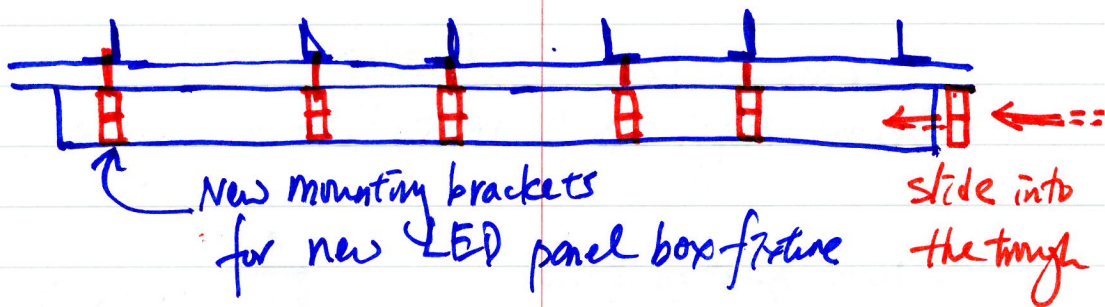
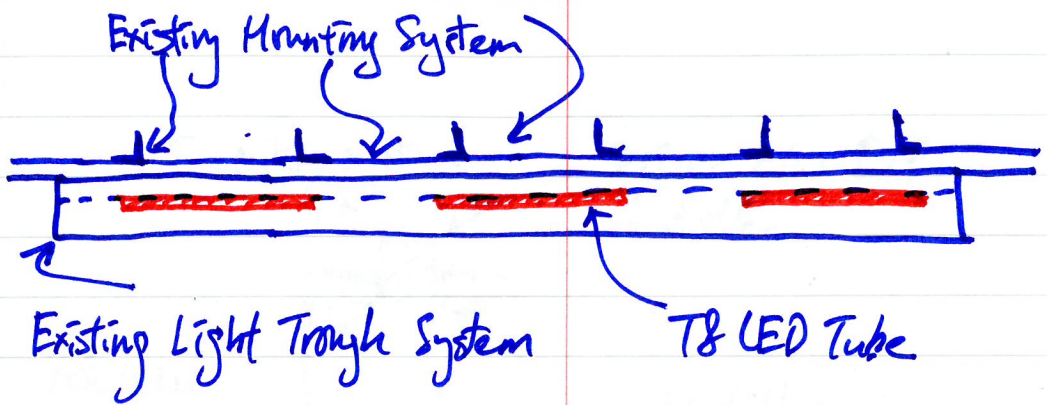
- ① Remove the existing T₈ LED Tube Fixture
- ② introduced the new mounting system for a new complete LED Fixture



Fixture mount into the trough
consequently position.

- ① The existing system remain unchanged
- ② New whole 1200x100 LED back-lit light box clw LiFi driver fit into the trough as current T₈ tube position.

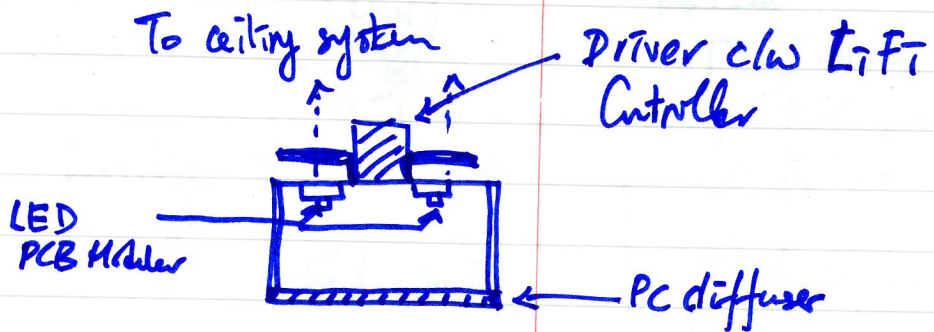
Modification of Existing Lighting System - Section Drawing



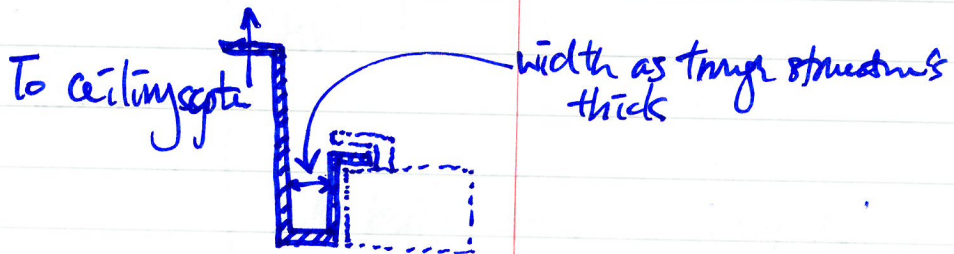
Existing
T8, 16W, 2000lm x 0.8
↑
LiFi fixture

Proposed
LED fixture 14~16W
1800lm c/w DALI
driver + LiFi driven

Modification of Existing Lighting System - Side View



LED Light Box (custom-made)
 subject to the width of the light trough



Custom-made bracket to fit with
 both existing ceiling system & light trough

Modification of Existing Lighting System -
 Custom-made Mounting Bracket